

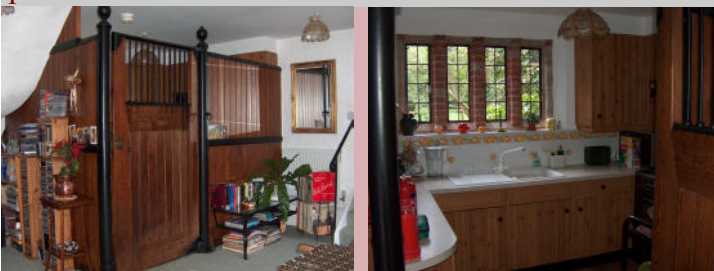


## The Stables Annexe Self-catering cottage

Telephone: 01394 411591

### General Information

This beautiful converted stables, located down a quiet lane close to the village of Shottisham in Suffolk, offers quality self-catering accommodation for up to 4 people. There is a comfortable lounge, with french doors giving access to an attractive garden overlooking a large pond.



A kitchen, and a dining area on the south-side of the property, allow you to enjoy meals at any time. The well-equipped ground floor bathroom provides a shower cubicle, and a bath with another shower head. Upstairs there are two bedrooms, one double and one twin.

The double room gives access to a south-facing balcony overlooking the courtyard, and fields beyond. Washbasins are provided in both rooms, and there is a separate toilet on the landing between the rooms. The property is centrally heated and the cost is included in our tariff.



Relax in the tranquility of this lovely setting, or enjoy walks in the surrounding countryside. The River Deben is easily accessed by a network of footpaths.

We regret that the property is not suitable for wheelchair access due to multiple levels.

### Contacting Us

Telephone 01394 411591

e-mail [mike.hazelwood@btinternet.com](mailto:mike.hazelwood@btinternet.com)

Post M & J Hazelwood  
Three Gables,  
The Street,  
Shottisham  
Woodbridge  
Suffolk IP12 3ET

### Finding Us

#### By Road

From the A12 take the A1152, signed Bawdsey & Orford, to Melton. Just beyond the Wilford bridge bear right on the B1083. At the next junction go straight on towards Bawdsey. Pass through Sutton village then, at the next T-junction, turn left into Shottisham village. Three Gables is situated on the right, just beyond the black barn. We will escort you to The Stables from there.

#### By Rail

Take the mainline service to Ipswich, then the East Suffolk branchline to Melton.



The Stables Annexe  
Self-catering cottage

Telephone: 01394 411591

## Tariff 2008 / 2009

Accommodation for a maximum of 4 people. The property is not suitable for children under the age of 12.  
Prices include Bedding, Towels and Heating (if required).  
Weekly letting commences on Saturday - access from 16:00, vacating by 10:00  
Earlier arrival time for short breaks by arrangement.

### June, July, August and all Bank Holidays **£580 / week**

#### Short Breaks (minimum 2 nights stay)

Friday, Saturday & Sunday	2 nights - £320
	3 nights - £420
Monday to Thursday	2 nights - £280
	3 nights - £360
	4 nights - £480

### May and September **£490 / week**

#### Short Breaks (minimum 2 nights stay)

Friday, Saturday & Sunday	2 nights - £280
	3 nights - £360
Monday to Thursday	2 nights - £240
	3 nights - £330
	4 nights - £440

### October 2008 to April 2009 **£375 / week**

(excluding Christmas, New Year and Easter)

#### Short Breaks (minimum 2 nights stay)

Friday, Saturday & Sunday	2 nights - £240
	3 nights - £300
Monday to Thursday	2 nights - £200
	3 nights - £240
	4 nights - £320

### Payment Terms

A deposit of one-third of the total cost will be required to confirm your booking. This deposit will be refunded if cancellation is advised at least one month in advance of the booked date.

**Payment by Cash or Cheque please.** Cheques payable to M & J Hazelwood

Three Gables, The Street, Shottisham, Woodbridge, Suffolk IP12 3ET  
Proprietors: June & Mike Hazelwood